

OLYMPUS[®]

Your Vision, Our Future

Industrial Videoscope

IPLEXFX

Internal Working Channel Scope

NEW

Find the problem Solve the problem

A portable industrial videoscope with a small 6.2 mm (0.244 inch) diameter internal working channel and retrieval tools.



Internal working channel scope expands inspection capabilities

Retrieve foreign objects, take samples, and perform hook and drag engine inspections

Note: The IPLEX FX is the OEM scope of choice for the F-135/JSF engine.



Interchangeable scope with integrated working channel

IPLEX FX features interchangeable scope units for configuration flexibility to meet the needs of a wide range of inspections. The new 6.2 mm (0.244 inch) diameter working channel scope is ideally suited for foreign object retrieval and hook/drag applications. Combining the working channel into the borescope minimizes the scope diameter for use in very small and narrow places and transforms the IPLEX FX into a fast and efficient retrieval tool system.

Other non-working channel scope units are available in 4.0 mm (0.157 inch) and 6.0 mm (0.236 inch) diameters with lengths up to 18.0 m (59.1 feet) long. The tungsten braided insertion tube with Tough Tapered Flex design provides excellent insertability and fray resistance.



Outstanding portability and durability

The compact and robust IPLEX FX is easy to use in harsh environments, thanks to the compliance of the unit to MIL-STD-810F, ensuring resistance to rain, wind, dust and humidity as well as physical shock. The internal battery allows you to work in isolated locations, away from a mains power supply, and provides 2.5 hours of continuous operation.

Sharp, clear images anywhere

The IPLEX FX monitor now features Daylight-View for outdoor use in bright sunlight. When combined with advanced imaging technology and Olympus proprietary WiDER™ image processing algorithm, the IPLEX FX system consistently delivers clear, vivid and sharp borescope images.



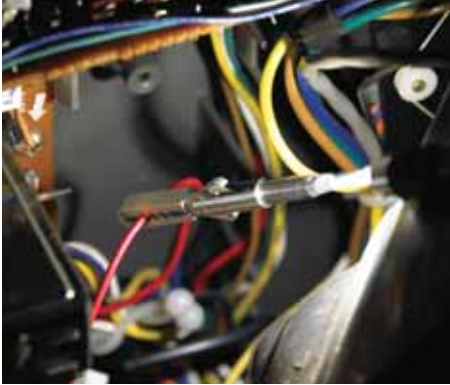
Advanced measurement and image recording functions

IPLEX FX is equipped with many advanced features that provide maximum capabilities in an easy to use format — measure and analyze suspected defects at any angle in up to eight different measurement modes; attach detailed inspection notes with ImageNotepad™; and intuitive file management and recall functions.

Six versatile retrieval tools

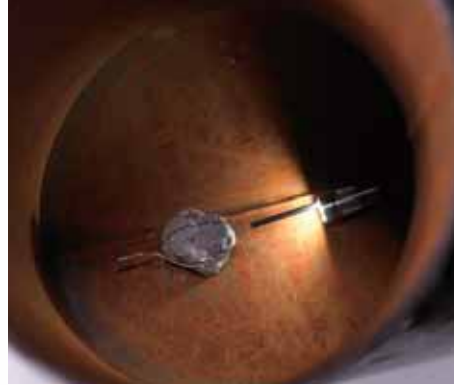
Alligator

For retrieving large objects



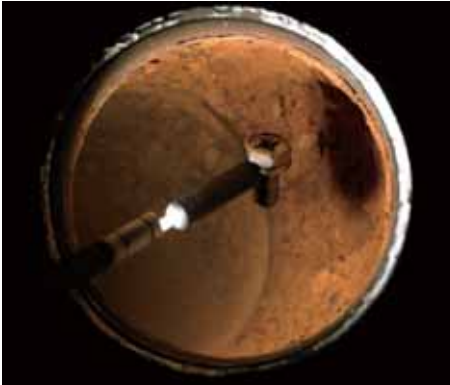
Basket

For retrieving spherical objects



Magnet

For retrieving magnetic objects



Snare

For retrieving protruding objects



Grasper

For retrieving small objects



Hook

To aid scope navigation when inspecting intricate engines



Internal Working Channel Scope Unit Specifications

Please see "IPLEX FX features and specifications" for more details. The scope unit only works with the IV8000 or IV8000-2 base unit.

Model No.	Scope Diameter	Scope Length	Exterior	Tube Flexibility	Articulation Angle	Weight
IV8635X1	6.2 mm (0.244 in.)	3.5 m (11.5 ft.)	Tungsten with special processing	TTF tube with flexibility gradually increasing toward the distal end.	UP/DOWN/RIGHT/LEFT 120°	1.9 kg (4.2 lbs.)

Insertion Tube

Channel inner diameter: ϕ 1.6 mm (0.063 inch) internal channel

Articulation mechanics: True Feel™ scope tip articulation with electronic power-assisted, manual articulation.

Temperature sensor: 2-stage indicator for high temperature warning.

Supplied accessories: Two hook assemblies and six hooks are supplied with the scope unit.

Handheld Control Unit

Quick access controls: The following features have dedicated quick access buttons, levers or joysticks on the hand control unit:

Live mode, WiDER™ Gain Control, Brightness, Zoom, Freeze Image, Record Still/Video, Articulation Control, Articulation Lock, Menu Access, Saved Recording Index Access, Quick Last Image Recall.

Tip Adapter Specifications

Viewing Tip Adapters					Stereo Tip Adapters	
Product abbreviation	AT120D/NF-IV86X1	AT120D/FF-IV86X1	AT80S-IV86X1	AT120S-IV86X1	AT60D/60D-IV86X1	AT60S/60S-IV86X1
Character color	Red	Green	Black	Black	Blue	Blue
Optical system	Field of view	120°	120°	80°	120°	60°/60°
	Direction of view	Forward	Forward	Side	Side	Forward/Forward
	Depth of field *1	4 to 190 mm	25 to ∞ mm	18 to ∞ mm	6 to ∞ mm	5 to ∞ mm
	F no.	9.2	3.3	4	5.9	7.5
Distal end	Outer diameter *2	ϕ 6.2 mm	ϕ 6.2 mm	ϕ 6.2 mm	ϕ 6.2 mm	ϕ 6.2 mm
	Distal end *3	20.6 mm	20.5 mm	24.7 mm	24.7 mm	32.9 mm

NOTES: *1. Indicates the range over which the image can be viewed clearly. *2. The adapter can be inserted into a ϕ 6.2 mm (0.244 inch) hole when it is mounted on the scope.

*3. Indicates the length of the rigid portion at the scope's distal end when mounted.

Locking mechanism: Double-threaded attachment with O-ring seal

Illumination: Multiple high-intensity LEDs

Tip Adapter identification: Automatic SmartTip™ recognition technology

Internal Working Channel Scope Operating Environment

Operating temperature: In air: -13 to 212° F (-25 to 100° C)

Operating atmospheric pressure: In air: 1 atm (1013 hPa)

Relative humidity: 15 to 90%

Liquid resistance: Operable when exposed to machine oil, light oil or 5% saline solution



<http://www.olympus-ims.com>

• OLYMPUS CORPORATION is ISO9001/ISO14001 certified.

Specifications, design and accessories are subject to change without any notice or obligation on the part of the manufacturer. Olympus and IPLEX logos are registered trademarks of Olympus Corporation in the United States and other countries. WiDER(TM) logo, Spot-Ranging(TM), SmartTip(TM) and TrueFeel(TM) are trademarks of Olympus Corporation in the United States and other countries.

OLYMPUS

www.olympus.com

OLYMPUS CORPORATION
Shinjuku Monolith, 3-1 Nishi-Shinjuku 2-chome, Shinjuku-ku, Tokyo 163-0914, Japan
OLYMPUS INDUSTRIAL SYSTEMS EUROPA
Stock Road, Southend-on-Sea, Essex SS2 5QH, United Kingdom
OLYMPUS SURGICAL & INDUSTRIAL AMERICA INC.
One Corporate Drive, Orangeburg, New York 10962, USA
OLYMPUS SINGAPORE PTE LTD.
491B River Valley Road #12-01/04, Valley Point Office Tower, Singapore 248373

OLYMPUS MOSCOW LIMITED LIABILITY COMPANY
117071, Moscow, Malaya Kaluzhskaya 19, bld. 1, fl.2, Russia
OLYMPUS AUSTRALIA PTY LTD.
31 Gilby Road, Mount Waverley, Victoria 3149, Australia